

ECONOMICAL & REASONABLE FOR DENTAL LAB AND PRACTICE

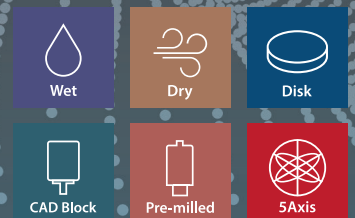


The 5-axis milling machine
for wet and dry machining.



ARUM 5X-400

ARUM



ARUM Milling Machine Line-up



Model	5X-500L	5X-500	5X-200	5X-450
Axis	5 Axis	5 Axis	5 Axis	5 Axis
Processing	Wet and Dry	Wet and Dry	Wet and Dry	Wet and Dry
Max. RPM	60,000	60,000	60,000	60,000
Spindle Power	AC 3.6kw	AC 3.6kw	AC 3.0kw	AC 1.28kw
A.T.C	20	20	15	15
Tool Shank (mm)	Ø6	Ø6	Ø6	Ø6
Motor	Servo	Servo	Servo	Stepping
Drive Mechanism	Ball Screw	Ball Screw	Ball Screw	Ball Screw
Way System	Linear Guide	Linear Guide	Linear Guide	Linear Guide
Total Size (W*D*H)	1078*921*1713mm	689*918*1706mm	815*949*1755mm	791*791*1657mm
Weight (Machine / Table)	360 kg / 110 kg	230kg / 65kg	270kg / 135kg	185kg / 65kg
Travel	X, Y, Z axis	227.5*125*131mm	227.5*125*131mm	245*116*130mm
	A axis / B axis	360° / +40° ~ -31.5°	360° / +40° ~ -31.5°	360° / ±30°
Disk Jig or Cartridge Type	O type, C type	O type, C type	O type	C type
Number of Jig	12	-	-	-
Jig exchange	Auto	-	-	-

Materials

Pre-milled Blank	◎ (10ea)	◎ (10ea)	◎ (5ea)	◎ (5ea)
Co-Cr & Ni-Cr Disk	○	○	◎	X
Titanium Disk	◎	◎	◎	○
Lithium Disilicate	○	○	○	○
Nanocomposite	◎	◎	◎	◎
Zirconia	◎	◎	◎	◎
PMMA	◎	◎	◎	◎
PEEK	◎	◎	◎	◎
Wax	◎	◎	◎	◎

Applications

Implant Bar	◎	◎	◎	◎
Screw-Retained Bridge	◎	◎	◎	◎
Customized Abutment	◎	◎	◎	◎
Hybrid Abutment	◎	◎	◎	◎
Inlay & Onlay	◎	◎	◎	◎
Crown & Coping	◎	◎	◎	◎
Crown & Coping Bridge	◎	◎	◎	◎
Model	◎	◎	◎	◎
Bite Splint	◎	◎	◎	◎
Denture	◎	◎	◎	◎



4X-450	5X-400	5X-300 Pro	5X-300D
4 Axis	5 Axis	5 Axis	5 Axis
Wet	Wet and Dry	Wet and Dry	Dry
50,000	80,000	80,000	60,000
AC 1.8kw	AC 0.5kw	AC 0.67kw	AC 0.5kw
6	10	12	12
Ø6	Ø4	Ø4	Ø4
Stepping	Stepping	Stepping	Stepping
Ball Screw	Ball Screw	Ball Screw	Ball Screw
Linear Guide	Linear Guide	Linear Guide	Linear Guide
791*791*1657mm	568*643*1616mm	568*641*1583mm	568*641*645mm
185kg / 65kg	100kg / 65kg	90kg / 65kg	90kg / -
241*116*130mm	146*122.3*106.5mm	167*119.8*94mm	167*119.8*94mm
360° / -	±35.2° / 360°	±30° / 360°	±30° / 360°
-	O type	C type	C type
-	-	-	-
-	-	-	-
◎ (10ea)	○ (2ea)	X	X
X	X	X	X
X	X	X	X
X	◎	◎	X
X	◎	◎	◎
X	◎	◎	◎
X	◎	◎	◎
X	◎	◎	◎
X	◎	◎	◎
X	X	X	X
X	X	X	X
◎	○	X	X
X	◎	◎	◎
X	◎	◎	◎
X	◎	◎	◎
X	◎	◎	◎
X	◎	◎	◎
X	◎	◎	◎
X	○	◎	◎

* Products are subject to change without notice to improve quality, function, design or otherwise. / ◎: High Compatibility / ○: Compatibility / X: Non-Compatibility

ARUM 5X-400

RPM
80,000



Built-in Control PC

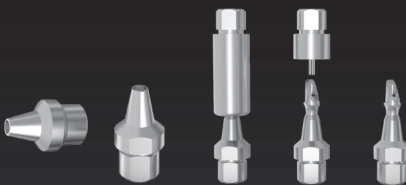
Easily access the teamviewer to support.

Excellent Outcome for CAD Blocks



Solid Machine Frame for Incomparable Quality

Connectorless Abutment Milling



Easy to Change Wet and Dry Milling



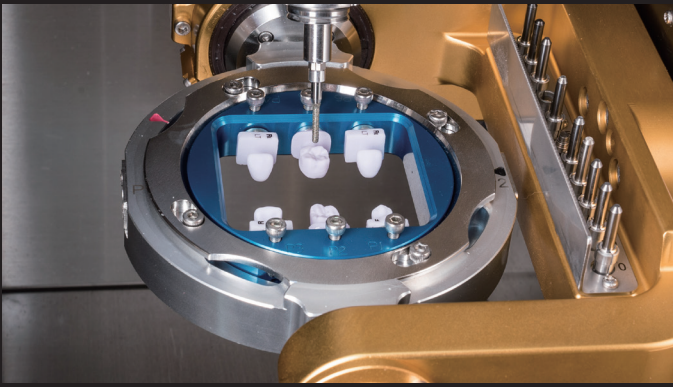
Delicate Milling on Zirconia

0.3mm tool to support.

Materials & Applications Info.

Materials		Applications	
Pre-milled Blank	○ (2ea)	Implant Bar	×
Co-Cr & Ni-Cr Disk	×	Screw-Retained Bridge (Crown & Coping)	×
Titanium Disk	×	Customized Abutment	○
Lithium Disilicate	◎	Hybrid Abutment	◎
Nanocomposite	◎	Inlay & Onlay	◎
Zirconia	◎	Crown & Coping	◎
PMMA	◎	Crown & Coping Bridge	◎
PEEK	◎	Model	◎
Wax	◎	Bite Splint	◎
		Denture	○

◎: High Compatibility / ○: Compatibility / X: Non-Compatibility

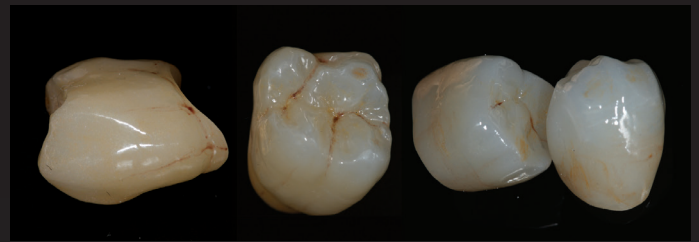
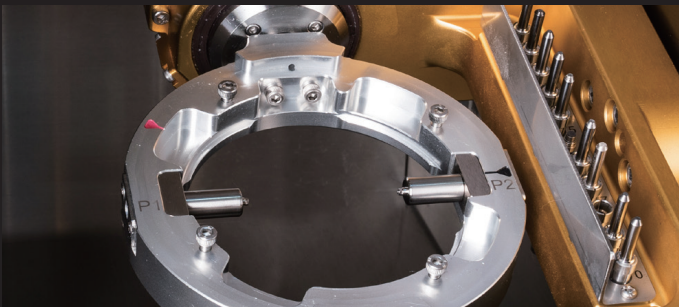


Unrivaled Grinding Capability

With the adoption of a high RPM specialized spindle, this equipment boasts its unrivalled capability of grinding Lithium Disilicate (Glass Ceramic). We improved user convenience by applying the cartridge that can mount and machine up to 6 CAD Blocks (Lithium Disilicate, Nanocomposite), and the application of high-precision ball screws allows you to get high quality machining outputs.

User-friendly Environment

With Auto Calibration Function, you can maintain the best condition of machine anytime, anywhere. You can always see a certain level of machining. U.I design makes operation of equipment easy and simple.



Your Reasonable Choice

You can machine various materials from Zirconia Disk to CAD Block, Pre-milled Blank, and select between wet and dry machining. You can enjoy the maximum results at a reasonable price.

Like Natural Teeth

Every patient wants a prosthesis that looks natural. With milling the grooved part precisely using ARUM's 0.3mm tool for Zirconia, you can reproduce the teeth that look natural.

Specifications

Axis	5 Axis	Drive Mechanism	Ball Screw	
Processing	Wet and Dry	Way System	Linear Guide	
Spindle Power	AC 0.5kw	Machine Size (W*D*H)	568*643*680mm	
Max. RPM	80,000	Total Size (W*D*H)	568*643*1616mm	
A.T.C	10	Weight (Machine / Table)	100kg / 65kg	
Tool Shank (mm)	Ø4	Travel	X,Y,Z axis	146*122.3*106.5mm
Motor	Stepping		A / B axis	±35.2° / 360°

Tool List

Material	Code	Ø	Size	Material	Code	Ø	Size
Zirconia	ZB-46	2.0	D2.0*L18*50	Glass ceramic	DG-52	2.5	D2.5*L13*44.5
	ZB-47	1.0	D1.0*L16*50		DG-53	1.5	D1.5*L10*44.5
	ZB-48	0.6	D0.6*L10*45		DG-54	1.0	D1.0*L10*44.5
	ZB-65	0.3	D0.3*L12*45		DG-55	0.6	D0.6*L08*41
PMMA	MOB-56	3.0	D3.0*L20*50	T-cutter	TC-80	1.8	D1.8*L08*45
	PB-49	2.0	D2.0*L18*50		TC-98	2.0	D2.0*L08*45
	PB-50	1.5	D1.5*L14*47	Metal(Premilled Blank)	MB-58	2.0	D2.0*L12*44
PB-51	1.0	D1.0*L10*44	MB-59		1.5	D1.5*L10*43	
Flat endmill	ZF-70	1.7	D1.7*L18*50		MB-60	1.0	D1.0*L08*42
	ZF-75	0.6	D0.6*L08*45				

WE SHARE THE EXPERIENCE
with
PERFECTION

GET IN TOUCH

Arum Europe GmbH

Am Kronberger Hang 2
65824 Schwalbach am Taunus
Germany

+49 (0)6196 9695 675(6)
info@arumeurope.com
www.arumdentalshop.com

Arum 3D Solutions Ltd.

26C Lyon Road Walton-on-Thames
KT12 3PU
United Kingdom

+44 (0)207 388 1390
info@arumdental.com
www.arumdental.com



Scan me for whatsapp!